



Add.: 130 Konrad Crescent, Unit 11 Markham, Ontario L3R 0G5 Canada  
 ☎ 1-855-881-8666 / 1-905-604-8116



## Floor Pollution Control Matting System



## DIRECTORY

- 1/ Floor Pollution Control Matting System
- 3/ Company Introduction
- 4-5/ Customer List
- 6-7/ First Guard
- 8-9/ Walk Off ( Viking )
- 10-11/ Flexi Guard 99
- 12-13/ Super Guard
- 14-15/ Comfort / Comsan
- 16-17/ Magic Mat
- 18-19/ Action Mat / Action Mat Plus
- 20-21/ Atrium Plus / Ripple Xtra / Jaguar Xtra
- 22-23/ Cero / Cero Plus
- 24-25/ Armor Easy / Armor Plus
- 26-27/ Mat 3000
- 28-29/ M 4000
- 30-31/ Luxor VIP Mat / VIP Mat
- 32-33/ Logo Mat / Banner Mat
- 34-35/ Magic Mat ( residential )
- 36-37/ Bath Mat
- 38-39/ Washroom Mat
- 40-41/ Anti-Fatigue Mat
- 42-43/ Hex Guard
- 44-45/ Slip Guard
- 46-47/ Launderable Mat
- 48-49/ Car Mat



FloorGuard Matting Manufacturing was established in Shanghai in 2011 and is a wholly-owned subsidiary of RISMAT® Group. As a fully automatic, modern factory, FloorGuard operates with a lean workforce of approximately 40 full-time employees. Even with such a small staff, the annual production capacity value can reach over \$30 million USD per year. The factory covers an area of 69,000 sq. ft. (6,400 sq. meters) and consists of tufting, prepping, manufacturing, packaging and warehousing, as well as office and quality control space for support staff. The primary matting products manufactured at this location consists of cotton, nylon, polypropylene, polyester, and rubber mats.

## Floor Pollution Control Matting System

Up to 80% of all dirt in both commercial and residential buildings is carried in by pedestrian traffic. Floors are the most abused element in any facility. On hard flooring abrasive dirt particles scrape and damage the surface. The foot traffic of 1,500 people can remove 42% of the floor's finish, and 95% of all carpet appearance problems are caused by soil and traffic patterns. Rismat® has developed a new range of products, offering a complete solution to all flooring problems.

Rismat's Floor Pollution Control Matting System is designed to prevent dirt and dust from entering the premises by uncontrolled foot traffic. By adopting our method, you can achieve considerable cost savings and help the environment at the same time, by using less cleaning personnel, water resources, and cleaning chemicals.





## Company Introduction

RISMAT® (FloorGuard), an eco-matting solution company, was established in 1993 in Hong Kong and entered into Shanghai, China in 1994.

We have developed two new concepts in the past two decades:

**Floor Pollution Control System**  
**Occupational Health & Safety System**

In 2011, RISMAT® (FloorGuard) Canada Branch Office was established in Toronto, and FloorGuard Manufacture Center was established in Shanghai.

Our eco-matting products can be used for a variety of floor environments such as high-end hotels, commercial & residential properties, factories, schools, hospitals & research labs as well as many other public areas.

Rismat® ( FloorGuard's ) eco-matting products include commercial high-end advertising/logo mats, from industrial heavy-duty mats to trendy automobile mats, as well as residential/home green eco-mats.



Bring the Safe & Clean Floors to you everyday.



Customer List (Hotel)



The above is listed in no particular order

Customer List (Property)



The above is listed in no particular order





## First Guard

First Guard is a high traffic mat. This modular, multi-purpose flooring tile is frequently installed as an anti-slip door mat. It is also used in a variety of industrial and commercial tasks. First Guard can be surface mounted by using our unique edging system. For those wanting a more polished look, an optional border is also available. First Guard is ideal for all seasons and is easy to maintain through periodic washing with a hose or pressure washer. First Guard is your ideal outdoor mat and performs well as a primary scrub mat. It is your first defense against floor pollution.

### Features

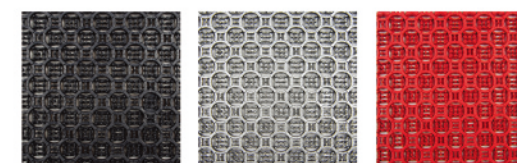
- Molded from a durable, UV resistant PVC compound.
- Modular design allows quick replacement of worn out or damaged tiles.
- Overlapping heel-safe parallel circle design incorporates resilient scrapers making it highly effective at trapping dirt and debris.
- Flow-through parallel circle structure, combined with the recessed grooves, facilitates unrestricted water drainage.
- Designed for heavy foot traffic and intended for areas that require additional drainage capability.

### Applications

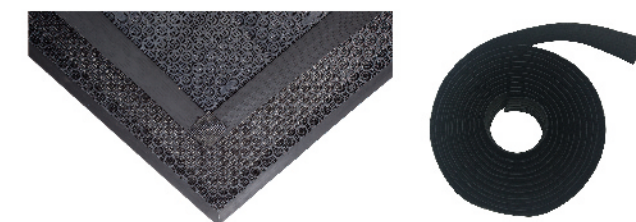
- Best suited as your primary defense outside public buildings, shopping malls, schools, hospitals, entertainment venues, etc.
- It is an excellent outdoor mat solution where a durable and lightweight mat is required.

### TECHNICAL SPECIFICATIONS

|  |                                      |
|--|--------------------------------------|
| Material : UV resistant PVC                                      | Weight : Approx.4.5kg/m <sup>2</sup> |
| Thickness : Approx.9mm   | Temp resistance : -30°C up to +50°C  |
| Tile size : 20cm x 20cm  | Size in use : 19.25cm x 19.25cm      |
| Fire resistance : GB 8624-2012,GB/T 11785-2005,GB/T 8626-2007,B1 |                                      |



● Graphite    ● Silver    ● Red



Accessory: Rubber linear border (3cm)

Suitable for : Hallways, Open-air corridors, Open-air balconys,  
Tea rooms, Outside gates, etc.





## Walk Off ( Viking )

Walk Off (or Viking) is our modular, premium flooring tile. It is primarily installed as an outdoor matting system but can easily be fitted in mat wells. Walk Off (Viking) can be surface mounted by using our unique border edging system. It's great for all seasons and is easy to maintain through periodic washing with a hose or pressure washer. Ideally used as a primary scrub mat, Walk Off is your first defense against floor pollution.

### Features

- Molded from a durable, UV resistant PVC compound with coarse polyamide brush inserts.
- Modular design allows quick replacement of worn out tiles.
- Special surface scraper and brush textile provide superior scrubbing action to effectively remove coarse dirt and debris.
- This entrance mat is designed for medium to heavy foot traffic.

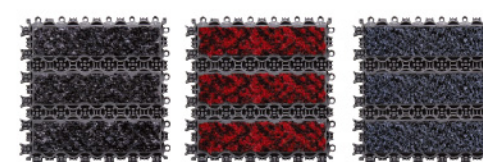
### Applications

- Best suited as your primary defense outside hotels, public buildings, shopping malls, entertainment venues, etc.
- It is an excellent outdoor mat solution where a durable and lightweight mat is required.

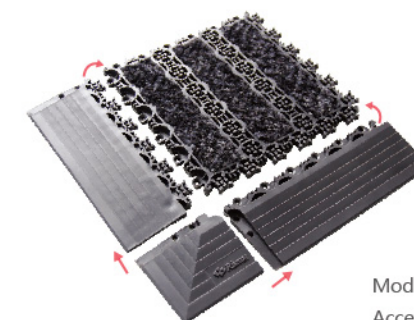
### TECHNICAL SPECIFICATIONS

Yarn type : Polyamide 6.6 monofilaments & special polypropylene monofilament  
 Pile construction : High twist and heat set-tufted cut pile  
 Backing : UV resistant PVC  
 Tile weight : Approx.8kg/m<sup>2</sup> ( Walk Off )  
 Tile weight : Approx.9.25kg/m<sup>2</sup> ( Walk Off Plus )  
 Tile size : 20cm x 20cm  
 Temp resistance : -30°C up to +50°C  
 Fire resistance : GB 8624-2012,GB/T 11785-2005,GB/T 8626-2007,B1

Thickness : Approx.12mm ( Walk Off )  
 Thickness : Approx.16mm ( Walk Off Plus )  
 Size in use : 19.5cm x 19.5cm



● Graphite ● Red ● Hard yarn



Modular tile  
 Accessory: modular linear edge  
 Accessory: modular corner edge

Suitable for : Corridors, Open-air balconys, Outside, etc.





## Flexi Guard 99

Flexi Guard 99 is another of our high traffic mats. It provides an innovative combination of a revolutionary matting system which captures up to 85% of dust and grit caused by heavy foot traffic. This modular, premium flooring tile is primarily installed as an entrance mat but is easily fitted into mat wells. The special surface scraper and brush textile removes coarse dirt effectively from shoes. It's great for all seasons and is easy to maintain through periodic washing with a hose or pressure washer. Flexi Guard 99 is ideal in high traffic areas.

### Features

- Molded from a durable, UV resistant PVC compound with coarse polyamide brush inserts.
- The carpet surface is removable and can be changed quickly.
- Offers the ability to create different design combinations to provide a unique look, yet is easy to install.
- Special surface scraper and brush textile provide superior scrubbing action to effectively remove coarse dirt and debris.
- This premium entrance mat is designed for heavy foot traffic.

### Applications

- Best suited as your primary defense outside hotels, public buildings, shopping malls, entertainment venues, etc.
- It is an excellent outdoor mat solution where a durable and lightweight mat is required.

### TECHNICAL SPECIFICATIONS

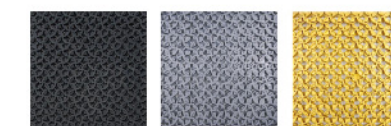
#### 9901/9903

Yarn type : Antistatic polyamide 6.6  
Pile construction : High twist and heat set-tufted cut pile  
9903 tile weight : Approx.10kg/m²  
9903 tile thickness : Approx.16mm  
9901 tile weight : Approx.10kg/m²  
9901 tile thickness : Approx.16mm

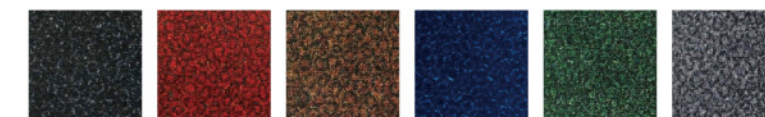
#### 9900

Material : UV resistant PVC  
9900 tile weight : Approx.8.8kg/m²  
9900 tile thickness : Approx.16mm

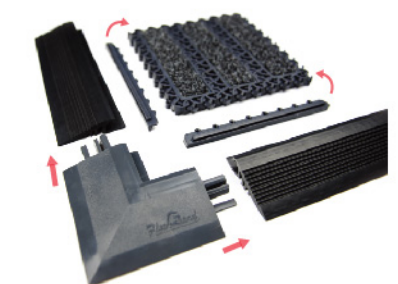
Tile size : 20cm x 20cm      Size in use : 19.25cm x 19.25cm  
Fire resistance : GB 8624-2012,GB/T 11785-2005,GB/T 8626-2007,B1



● Graphite    ● Silver    ● Gold



● Charcoal    ● Red    ● Brown    ● Blue    ● Green    ● Ash



Modular tile  
Accessory: modular linear edge  
Accessory: modular corner edge  
Accessory: modular connecting pin

Suitable for : Hallways, Aisles, Outside, etc.





## Super Guard

Super Guard is our enhanced, modular PVC floor mat. It is frequently installed as a scraper mat where aggressive scraping tines are required. Used as an outdoor entrance mat or fitted in mat wells, it can also be used for a variety of other recreational, industrial or commercial tasks. Super Guard can be surface mounted by using our unique edging system. It's great for all seasons and is easy to maintain through periodic washing with a hose or pressure washer. Ideally used as a snow scraper mat, Super Guard is your first defense against floor pollution.

### Features

- Molded from a durable, UV resistant PVC compound.
- Modular design allows quick replacement of worn out tiles.
- Enhanced parallel circle design of Super Guard incorporates aggressive scrapers making the product highly effective at scrubbing and trapping dirt and debris.
- Flow-through structure, combined with the recessed grooves, facilitates unrestricted water drainage.
- Designed for extreme weather and medium to heavy foot traffic.

### Applications

- Best suited as your primary defense outside schools, sports camps, ski resorts, stables, golf courses, recreational facilities, etc.
- It is an excellent outdoor mat solution where a durable and rugged mat is required.

### TECHNICAL SPECIFICATIONS

Material: UV resistant PVC

Thickness: Approx. 17.5 mm

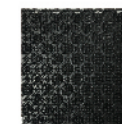
Tile size: 20 cm x 20 cm

Temp resistance: -25°C up to +50°C

Fire resistance: GB 8624-2012, GB/T 11785-2005, GB/T 8626-2007, B1

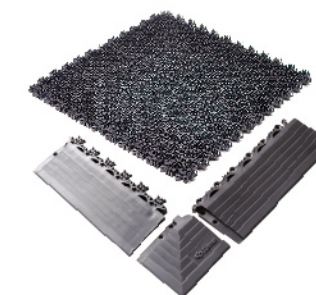
Weight: Approx. 7.3 kg/m<sup>2</sup>

Size in use: 19.25 cm x 19.25 cm



● Graphite

Suitable for : Hallways, Aisles, Outside, etc.



Modular tile

Accessory: modular linear edge

Accessory: modular corner edge





## Comfort / Comsan

Designed for easy installation, this hi-tech, modular floor tile provides safety and anti-slip functionality. Water will not accumulate on the tiles surface, as the bottom-seep design allows water to drain according to the slope of the floor.

Easy to clean and maintain, it is suitable for use at the pool side and sauna areas, as well as in showers and change rooms.

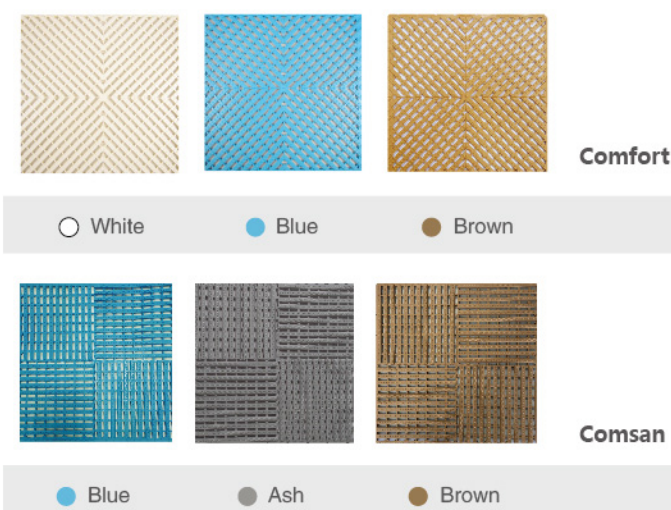
### TECHNICAL SPECIFICATIONS

#### Comfort

Material : Synthetic PVC  
Thickness : Approx.9mm  
Weight : Approx.3.6kg/m<sup>2</sup>  
Nominal Temp Range : 10°C up to +60°C  
Tile size : 30.5cm x 30.5cm  
Size in use : 30cm x 30cm  
Fire resistance :  
GB 8624-2012,GB/T 11785-2005,GB/T 8626-2007,B1

#### Comsan

Material : Synthetic PVC  
Thickness : Approx.9mm  
Weight : Approx.3.6kg/m<sup>2</sup>  
Nominal Temp Range : 10°C up to +60°C  
Tile size : 30.5cm x 30.5cm  
Size in use : 30cm x 30cm  
Fire resistance :  
GB 8624-2012,GB/T 11785-2005,GB/T 8626-2007,B1



Accessory : modular linear edge

Suitable for : Bathrooms, Tea rooms, Showers, Swimming pools, etc.





## Magic Mat

Magic Mats are our premium line of entrance mats, enhancing the safety and protection of most office and commercial floors. The specially blended cotton, high absorbent fiber yarn can hold many times its own weight in moisture and still function effectively.

### Features

- Magic Mats prevent moisture, dirt and grease from being transferred onto your floors, by effectively absorbing and trapping these substances in the mat.
- The mat's low pile height easily fits under most doors and supports quicker drying times.
- The rubber backing helps reduce the possibility of injuries due to slips and falls.
- Regular vacuuming and periodic cleaning with a light to medium use carpet extractor will ensure your mat's optimal performance and retain the warranty coverage.

### Applications

- Best suited in transition areas such as entrances and hallways into; public buildings, shopping malls, schools, hospitals, entertainment venues, manufacturing plants, commercial kitchens, washrooms, etc.

### TECHNICAL SPECIFICATIONS

Yarn type : High compound synthetic and natural fiber

Pile construction : Tufted cut pile

Pile weight : Approx.0.99kg/m<sup>2</sup>

Pile height : Approx.8mm

Roll size : 150cm x 1800cm ( Backing : Grease proof synthetic rubber )

Piece size : 90cm x 150cm/120cm x 180cm ( Backing : Grease proof synthetic rubber + Gripper )

Indoor air quality testing : Conforms to GB 18401-2010 ,

Does not contain formaldehyde and/or decomposable carcinogenic aromatic amine dyes



● Charcoal ● Red ● Dark Brown ● Brown ○ Ash ● Blue ● Green

Suitable for inside : Kitchens, Restaurants, Tea rooms, Washrooms, etc.

Not all colors are available in all areas. Check local vendors for specific color requests.





Action Mat



Action Mat Plus



Action Mat Plus



Action Mat

## Action Mat / Action Mat Plus

Action Mat and Action Mat Plus are high quality entrance mats that provide consumers with an extremely functional and durable mat at a competitive price. Like our Magic Mat, they can hold many times their own weight in moisture and still function effectively.

### Features

- Effectively absorb and trap moisture, dirt and grease.
- The specially formulated PVC backing creates a secure slip resistant base that will not let water leak through to your floor.
- Action Mat Plus also features stiff, monofilament bristles which provide superb scraping action to remove loose dirt and debris from shoes.
- Action Mat/Action Mat Plus have a deep pile, giving it a plush, more cushioned feel.

### Applications

- Best suited in transition areas in public buildings, shopping malls, schools, hospitals, entertainment venues, manufacturing plants, commercial kitchens, washrooms, etc. Anywhere that foot traffic contamination can be transferred from one area to another.

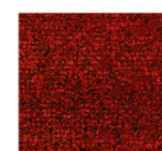
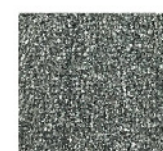
### TECHNICAL SPECIFICATIONS

#### Action Mat

Yarn type : High compound synthetic and natural fiber  
Pile construction : Tufted cut pile  
Total weight : Approx.3.83kg/m<sup>2</sup>  
Total height : Approx.9mm  
Backing : PVC compound  
Roll size : 120cm x 1800cm/200cm x 1800cm  
Indoor air quality testing : Conforms to GB 18401-2010 ,  
Does not contain formaldehyde and/or decomposable carcinogenic aromatic amine dyes

#### Action Mat Plus

Yarn type : High compound synthetic and natural fiber  
Pile construction : Tufted cut pile  
Total weight : Approx.3.60kg/m<sup>2</sup>  
Total height : Approx.9mm  
Backing : PVC compound  
Roll size : 120cm x 1800cm/200cm x 1800cm  
Indoor air quality testing : Conforms to GB 18401-2010 ,  
Does not contain formaldehyde and/or decomposable carcinogenic aromatic amine dyes



Action Mat

● Graphite

● Red



Action Mat Plus

● Graphite

● Red

Suitable for inside : Kitchens, Restaurants, Tea Rooms, Washrooms, etc.





## Atrium Plus / Ripple Xtra / Jaguar Xtra

The surface area of the Atrium Plus, Ripple Xtra and Jaguar Xtra is made up of 100% special composite nylon fibers. These special fibers increase the absorbency of any dirt that gets tracked in. A uniquely crafted die creates a UV resistance that ensures minimal fading, making these mats ideal for exterior use. The anti-slip, elastic compound backing helps to protect against slip and fall accidents. These mats are suitable for medium to high traffic areas such as hotels, shopping malls, business buildings, hospitals, factories, offices, villas, apartments, etc.

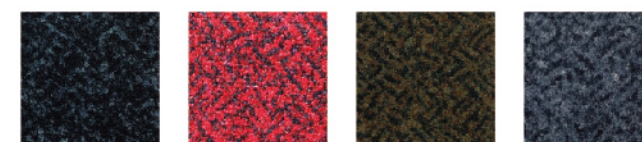
### TECHNICAL SPECIFICATIONS

#### Atrium Plus

Yarn type : Polyamide 6.6 monofilaments & special nylon wire  
Pile construction : High twist and heat set combination of mono and multi filaments  
Pile construction : Tufted cut pile  
Total weight : Approx.3.83kg/m<sup>2</sup>  
Backing : PVC compound  
Thickness : Approx.9mm  
Roll size : 200cm x 1800cm  
Indoor air quality testing : Conforms to GB 18401-2010 , Does not contain formaldehyde and/or decomposable carcinogenic aromatic amine dyes  
Color fastness test : GB/T 3921-2008,GB/T 3920-2008, GB/T 8427-2008 , Light fastness : Greater than 6 grade ; Fastness to washing : 4-5grade ; Friction fastness : 4-5grade

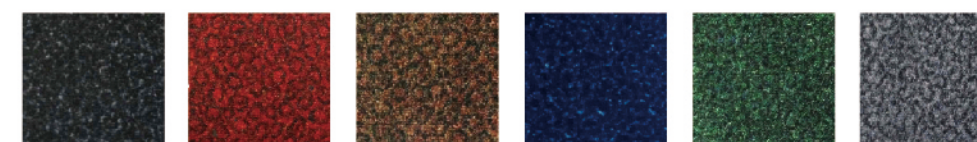
#### Ripple Xtra / Jaguar Xtra

Yarn type : Special nylon composite fiber  
Pile construction : Tufted cut pile  
Backing : PVC compound  
Pile weight : Approx.1.175kg/m<sup>2</sup>  
Roll size : 200cm x 1800cm  
Indoor air quality testing : Conforms to GB 18401-2010 , Does not contain formaldehyde and/or decomposable carcinogenic aromatic amine dyes  
Color fastness test : GB/T 3921-2008,GB/T 3920-2008, GB/T 8427-2008 ,  
Light fastness : Greater than 6 grade ;  
Fastness to washing : 4-5grade ;  
Friction fastness : 4-5grade



Atrium Plus

● Charcoal ● Red ● Brown ● Ash



Jaguar Xtra



Ripple Xtra

● Charcoal ● Red ● Brown ● Blue ● Green ● Ash

Suitable for : Hallways, Aisles, Elevators, Outside, etc.





## Cero / Cero Plus

Cero and Cero Plus are superior entrance matting designed for buildings with high traffic usage. In service for many years, Cero and Cero Plus have proven to stand up to extreme foot traffic and provide 24/7 protection, in addition to exceptional cleaning properties.

### Features

- Cero / Cero Plus effectively absorb and trap moisture, dirt and grease.
- Our nylon/high absorbent fiber yarn provides a durable and robust solution for commercial applications.
- The yarn's long lasting fade resistance maintains the mats' visual appeal while the thick pile provides a plush, cushioned feel underfoot.
- Cero Plus features additional bands of heavy-duty nylon monofilament fibers which provide exceptional scraping ability, facilitating the easy removal of coarse dirt/debris and enhance its durability.
- The specially formulated PVC compound backing provides a secure slip resistant base that will not let moisture seep through to your floor.

### Applications

- Designed for prolonged daily use, they are best suited for high traffic areas such as lobbies, public entrances and hallways in hotels, public buildings, malls, hospitals, entertainment venues, etc.
- They are suitable for use as surface cover matting or in shallow mat wells.

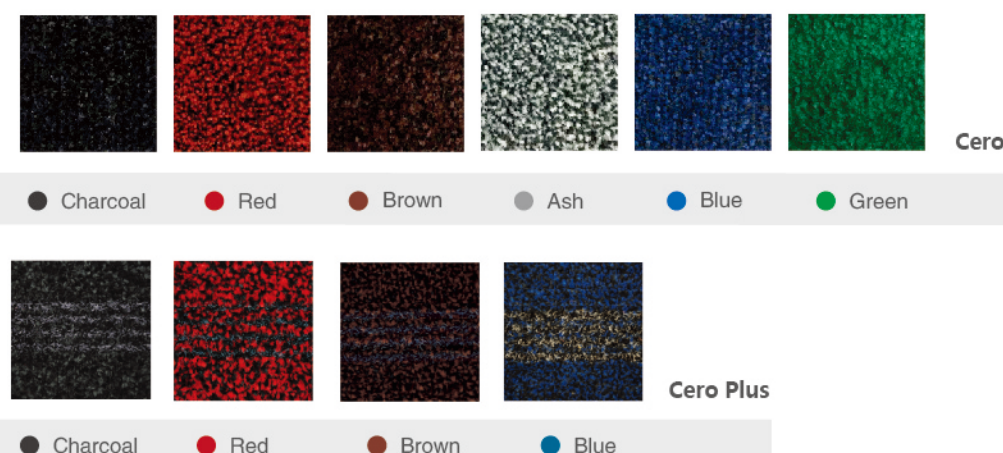
### TECHNICAL SPECIFICATIONS

#### Cero

Yarn type : Polyamide 6  
Pile construction : High twist and heat set-tufted cut pile  
Backing : PVC compound  
Total thickness : Approx.10mm  
Total weight : Approx.3.30kg/m<sup>2</sup>  
Roll size : 200cm x 1800cm  
Indoor air quality testing : Conforms to GB 18401-2010 ,  
Does not contain formaldehyde and/or decomposable carcinogenic aromatic amine dyes

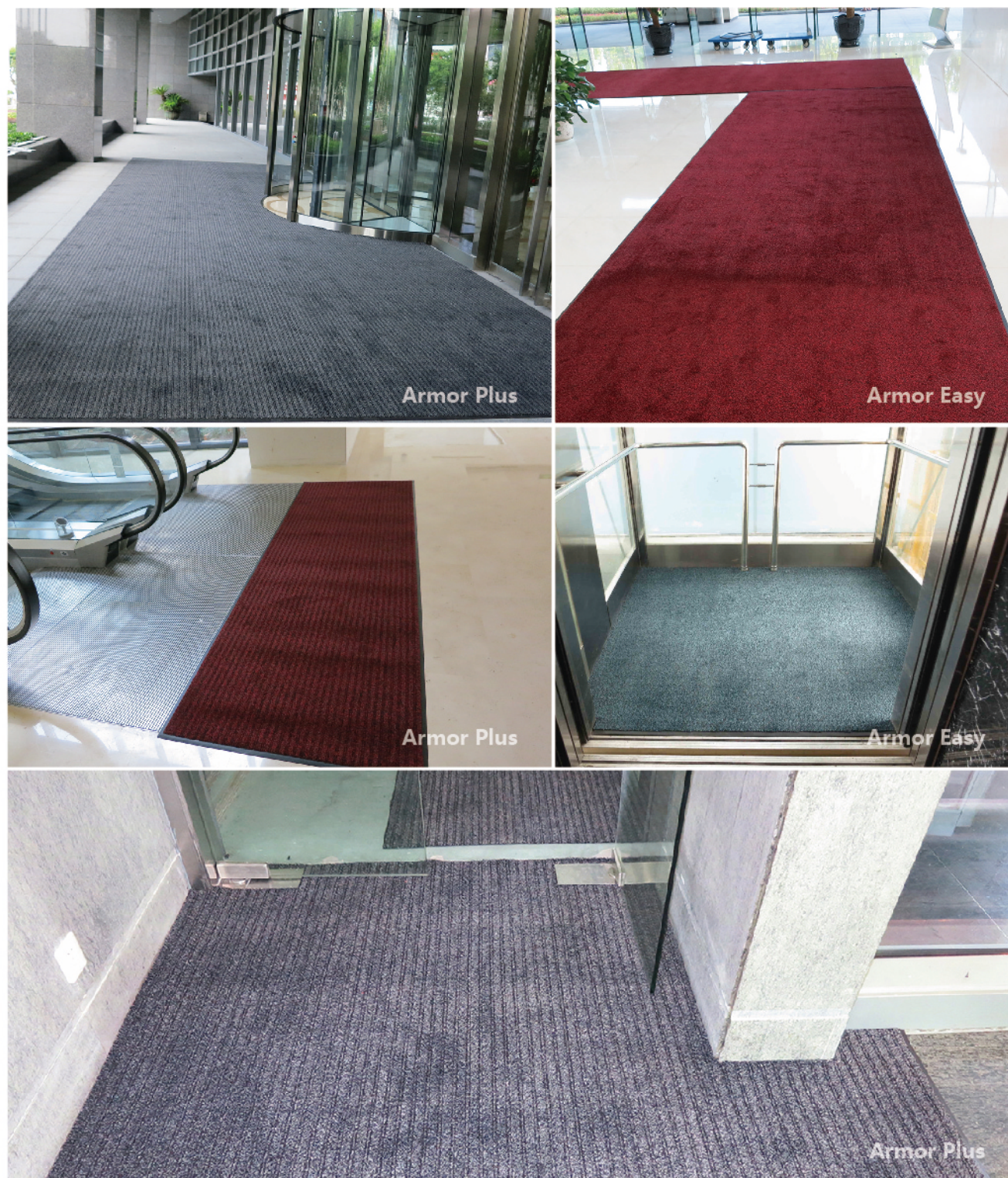
#### Cero Plus

Yarn type : Polyamide 6.6 monofilaments&PA6 multifilaments  
Pile construction : Tufted cut pile in stripes  
Backing : PVC compound  
Total thickness : Approx.10mm  
Total weight : Approx.4.20kg/m<sup>2</sup>  
Roll size : 200cm x 1800cm  
Indoor air quality testing : Conforms to GB 18401-2010 ,  
Does not contain formaldehyde and/or decomposable carcinogenic aromatic amine dyes



Suitable for : Outside, Hallways, Aisles, Elevators, Lobbies, etc.





## Armor Easy / Armor Plus

Armor Easy and Armor Plus mats are high quality entrance mats that are extremely functional and durable, offered at a competitive price. Like our Magic Mat, they can hold many times their own weight in moisture and still function effectively.

### Features

- Armor Easy/Armor Plus effectively absorb and trap moisture, dirt and grease.
- The specially formulated PVC backing creates a secure slip resistant base that will not let water seep through to your floor.
- Armor Plus also features stiff, monofilament bristles which provide superb scraping action to remove loose dirt and debris from shoes.
- Armor Easy/Armor Plus have a deep pile, giving it a plusher, more cushioned feel.

### Applications

- Best suited in transition areas in public buildings, shopping malls, schools, hospitals, entertainment venues, manufacturing plants, commercial kitchens, washrooms, etc. Anywhere that foot traffic contamination can be transferred from one area to another.

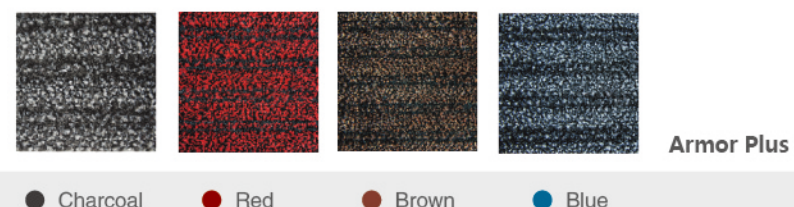
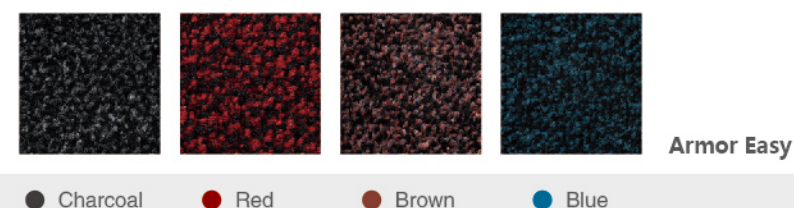
### TECHNICAL SPECIFICATIONS

#### Armor Easy

Yarn type : Synthetic fiber  
Pile construction : High twist and heat set-tufted cut pile  
Backing : PVC compound  
Pile height : Approx.8mm  
Roll size : 200cm x 1800cm  
Indoor air quality testing : Conforms to GB 18401-2010 ,  
Does not contain formaldehyde and/or decomposable carcinogenic aromatic amine dyes

#### Armor Plus

Yarn type : Synthetic fiber&Single fiber  
Pile construction : High twist and heat set-tufted cut pile  
Backing : PVC compound  
Pile height : Approx.8mm  
Roll size : 200cm x 1800cm  
Indoor air quality testing : Conforms to GB 18401-2010 ,  
Does not contain formaldehyde and/or decomposable carcinogenic aromatic amine dyes



Suitable for : Hallways, Aisles, Lobbies, Elevators, etc.





## Mat 3000

Mat 3000 is our quality ribbed mat that is available in either piece or roll formats and with or without a border. It can be used for all seasons and can be maintained through regular vacuuming and periodic washing with a hose or carpet extractor. Ideally used as a runner, Mat 3000 is your economic alternative for basic floor protection.

### Features

- The sturdy triple ribbed design scrapes and traps soil within the recessed grooves while the leak-proof PVC backing protects the floor underneath.
- Mat 3000 is designed for medium to heavy foot traffic and is intended for areas that require additional moisture retention.

### Applications

- Best suited for defining pathways and walkways in public buildings, shopping malls, schools, hospitals, entertainment venues, manufacturing plants, commercial kitchens, washrooms, etc.
- It is an excellent indoor mat solution where a durable and economical mat is needed.

### TECHNICAL SPECIFICATIONS

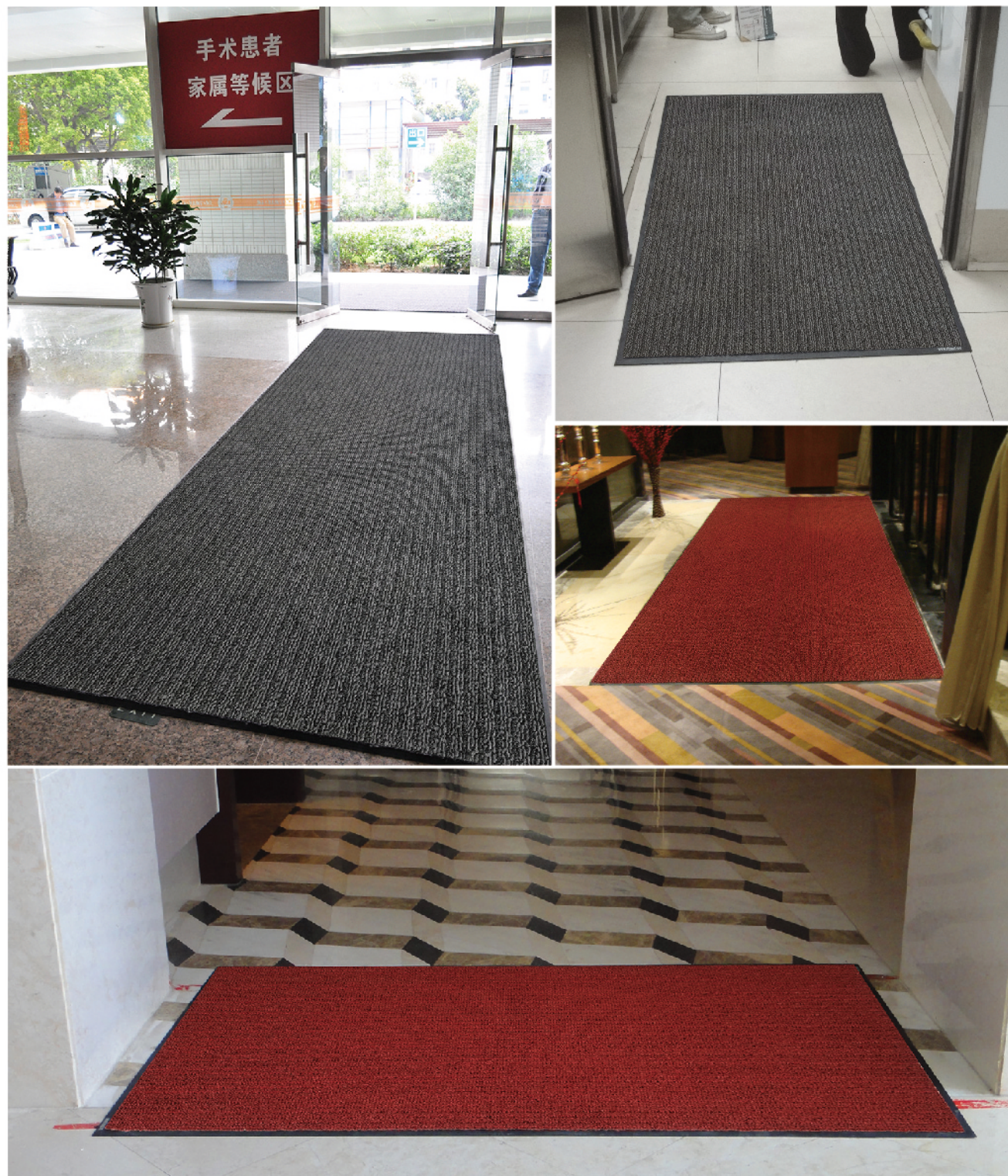
Yarn type : Synthetic fiber  
 Pile construction : Tufted cut pile in stripes  
 Total weight : Approx.3.80kg/m<sup>2</sup>  
 Backing : PVC compound  
 Thickness : Approx.8mm  
 Roll size : 120cm x 2500cm/180cm x 2500cm  
 Indoor air quality testing : Conforms to GB 18401-2010 ,  
 Does not contain formaldehyde and/or decomposable carcinogenic aromatic amine dyes



● Graphite ● Red

Suitable for : Hallways, Aisles, Kitchens, Tea Rooms, Washrooms, Elevators, etc.





## M 4000

M 4000 is a general designed product used for basic floor protection. It is constructed with a simple but elegant stripe design. Primarily used for dust control, it protects flooring and provides a safe surface for foot traffic. Ideal for rain and snow, M 4000 helps to maintain clean floors, reducing excessive cleaning costs.

### Features

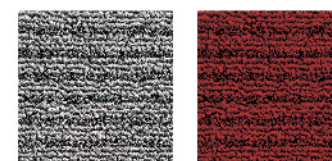
- Quick drying, mildew resistant polypropylene material
- The compound backing keeps liquids from spilling over onto floor, preventing possible slips and falls.

### Applications

- Best suited for defining pathways and walkways in public buildings, shopping malls, schools, hospitals, entertainment venues, manufacturing plants, commercial kitchens, washrooms, etc.
- It is an excellent indoor mat solution where a durable and economical mat is required.

### TECHNICAL SPECIFICATIONS

Yarn type : Synthetic fiber  
 Pile construction : Tufted cut pile in stripes  
 Total weight : Approx.3.80kg/m<sup>2</sup>  
 Backing : PVC compound  
 Thickness : Approx.8mm  
 Roll size : 120cm x 2500cm/180cm x 2500cm  
 Indoor air quality testing : Conforms to GB 18401-2010 ,  
 Does not contain formaldehyde and/or decomposable carcinogenic aromatic amine dyes



● Graphite ● Red

Suitable for : Hallways, Aisles, Kitchens, Tea Rooms, Washrooms, Elevators, etc.





## Luxor Mat / VIP Mat

Luxor and VIP mats are constructed using a luxurious textile and were specifically designed for buildings where prestige and comfort are valued, such as hotels, casinos, restaurants, etc. The Luxor and VIP mat will not only effectively remove the dirt but also protect and prolong the life of expensive floor coverings.

### Features

- Proprietary dye to achieve an ultra vibrant color.

### Applications

- Best suited in entrances and hallways where prestige and comfort are valued.

### TECHNICAL SPECIFICATIONS

Yarn type ( VIP ) : Synthetic fiber

Yarn type ( Luxor ) : Antistatic polyamide 6

Backing : PVC compound

Roll size ( VIP ) : 200cm×1800cm

Roll size ( Luxor ) : 180cm×2000cm

Indoor air quality testing : Conforms to GB 18401-2010 ,

Does not contain formaldehyde and/or decomposable carcinogenic aromatic amine dyes



● China Red ● Royal Red

Suitable for : Hallways, Aisles, Lobbies, etc.





## Logo Mat / Banner Mat

Logo and Banner mats are customized mats which can be used to turn your traditional floor mat into an exclusive one-of-a-kind. Consider these mats an enhancement to your overall corporate image. Commonly seen in developed countries, these Logo and Banner mats are as durable as any of our other mats. They are suited to heavy traffic areas such as hallways, aisles and elevators to name a few.

### Features

- Effectively absorbs moisture and dust control.
- 100% NBR rubber resists slipping and can be washed repeatedly.

### TECHNICAL SPECIFICATIONS

#### Logo Mat

Yarn type : 100% nylon fiber  
 Pile construction : High twist and heat set combination of mono and multi filaments  
 Pile construction : Tufted cut pile  
 Total thickness : Approx.9mm  
 Total weight : Approx.3.83kg/m²  
 Backing : PVC compound/NBR nitrile rubber  
 Indoor air quality testing : Conforms to GB 18401-2010 , Does not contain formaldehyde and/or decomposable carcinogenic aromatic amine dyes  
 Color fastness test : GB/T 3921-2008,GB/T 3920-2008, GB/T 8427-2008 , Light fastness : Greater than 6 grade ;  
 Fastness to washing : 4-5grade ; Friction fastness : 4-5grade

#### Banner Mat

Textile material : Polyester  
 Backing : Grease proof synthetic rubber  
 Indoor air quality testing : Conforms to GB 18401-2010 , Does not contain formaldehyde and/or decomposable carcinogenic aromatic amine dyes

Maximum can be printed by 16 colors with textured feel



Suitable for : Hallways, Aisles, Elevators, etc.





## Magic Mats (Residential)

Magic Mats are a superior house mat intended for absorbing dirt, oil and water while capturing dirt and moisture at the door, protecting floors and carpets from costly damage. Magic Mats help to prevent allergy-causing dust from entering your home and are exceptionally absorbent. They'll absorb many times their own weight in moisture and still function effectively. This remarkably absorbent mat is perfect for kitchens. They help prevent cooking grease from spreading into living and dining room areas by trapping it in the mat. Magic Mats are machine washable and can be hung up to dry. Pre-treated for superior absorbency means the more they are washed, the better they absorb.

### TECHNICAL SPECIFICATIONS

Yarn type : Special cotton composite fiber

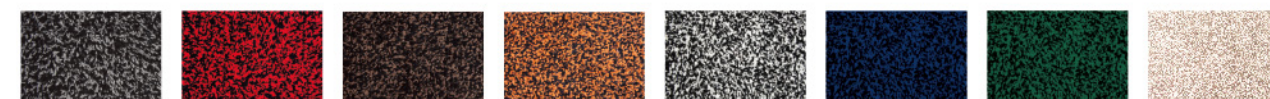
Pile construction : Tufted cut pile

Backing : Compound rubber

Size : 45 x 67.5cm / 50 x 75cm

Indoor air quality testing : Conforms to GB 18401-2010 ,

Does not contain formaldehyde and/or decomposable carcinogenic aromatic amine dyes



● Charcoal ● Red ● Coffee ● Brown ○ Ash ● Blue ● Green ● Beige

Suitable for inside : Kitchens, Washrooms, Entranceways, etc.





## Bath Mats

Rismat® Bath Mats absorb moisture, preventing dangerous slips on ceramics, stone and other decking. Perfectly designed for your bathroom and shower, our anti-slip Bath Mats are designed to fit any of hotel decor while providing an extra feeling of security by soaking up an incredible amount of water, suds and bubbles. This absorbent bath mat is soft, comfortable, and conveniently machine washable.

### Features

- The Rismat® Bath Mat adds superior comfort and maximum water absorption to your bathroom floor.

### Applications

- Premium absorbent Bath Mat is especially suitable for hotel and residential use.

### TECHNICAL SPECIFICATIONS

Yarn type : Special cotton composite fiber

Pile construction : Tufted cut pile

Backing : Compound rubber

Size : 60 x 90cm

Indoor air quality testing : Conforms to GB 18401-2010 ,

Does not contain formaldehyde and/or decomposable carcinogenic aromatic amine dyes



☐ White

Suitable for : Hallways, Aisles, Kitchens, Tea Rooms, Washrooms, Elevators, etc.





## Washroom Mat

Our Washroom Mat is disposable, and is intentionally designed that way to provide a convenient solution to washroom safety and floor protection. It effectively absorbs moisture, deodorizes interior areas and is engineered to be a cost effective, alternative to expensive and labor intensive maintenance.

### Features

- 100% NBR rubber resists slipping and effectively protects washroom flooring.
- Anti-bacterial, anti-microbial polyester fiber.
- Highly absorbent surface to catch and hold moisture prevalent around sinks, hand dryers, paper towel dispensers and urinals.
- Protect flooring around urinals from staining and the harmful effects of uric acid.
- Helps to control odours and assists in reducing transfer of contamination to other areas.
- Available in two standard sizes as well as bulk rolls.
- A convenient solution to manage floor safety and rising maintenance costs.

### Applications

- Best suited for public, commercial and industrial washroom environments where constant/frequent cleaning is not feasible

### TECHNICAL SPECIFICATIONS

Textile material : Anti-bacterial treated polyester

Backing : Grease proof synthetic rubber

Size : 40cm x 50cm

Indoor air quality testing : Conforms to GB 18401-2010 ,

Does not contain formaldehyde and/or decomposable carcinogenic aromatic amine dyes



● Charcoal ● Brown

Suitable for : Washrooms





## Anti-Fatigue Mats

Our Anti-Fatigue Mat is designed and engineered for maximum comfort and safety. Its resilient solid rubber construction is built tough to withstand the rigors of daily use. It comes standard with molded beveled edges and is easy to maintain by periodic washing with a hose or pressure washer. Our Anti-Fatigue Mat is also available in fiber coated colors by special order.

### Features

- Made from durable, 100% NBR rubber, it provides superior resistance to water, oil, grease, chemicals and animal fats.
- The smooth bubble structure of our Anti-Fatigue Mat acts to reduce the effects of worker fatigue by promoting gentle leg movement. This movement, although subtle, is enough to reduce some health risks associated with extended periods of standing.
- The anti-slip, anti-bacterial characteristics of the solid rubber construction, provides a comfortable, safe work surface that can also provide an effective insulating barrier from cold floors.

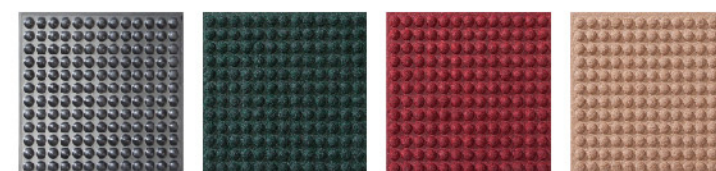
### Applications

- Anti-Fatigue Mats are an effective tool to reduce worker fatigue that has been associated with poor worker concentration, higher possibility of accidents, and lower productivity levels.
- Ideal for both commercial and industrial environments, our Anti-Fatigue Mat is an excellent solution where a durable and ergonomic mat is required.

### TECHNICAL SPECIFICATIONS

Material : Rubber  
 Thickness : Approx.12.7mm  
 Standard : 2'x3'(60cmx90cm)/3'x5'(90cmx150cm)  
 Functional : 2'x3'(60cmx90cm)/3'x5'(90cmx150cm)  
 Indoor air quality testing : Conforms to GB 18401-2010 ,  
 Does not contain formaldehyde and/or decomposable  
 carcinogenic aromatic amine dyes  
 Oil resistant test : After soaking in IRM903 oil at 60°C for  
 72 hours, no fading or deformation occurred.

Textile material : Polyester  
 Backing : Rubber  
 Thickness : Approx.9.4mm  
 Weight : Approx.2.4kg/pc  
 Size : 60cmx90cm  
 Indoor air quality testing : Conforms to GB 18401-2010 ,  
 Does not contain formaldehyde and/or decomposable  
 carcinogenic aromatic amine dyes



● Black ● Green ● Red ● Brown

Suitable for : Production line, Checkstand, Shipping department, Site welding, etc.





## Hex Guard

Grease resistant, solid rubber compound and beveled edges create a non-trip, non-slip work environment. Open construction allows solids and liquids to pass through, while leaving a clean, dry surface. They are anti-slip, anti-fatigue, wear-resistant, and anti-bacterial. They also provide a comfortable surface to relieve worker fatigue. It is ideal for commercial kitchens, as well as industrial applications.

### Features

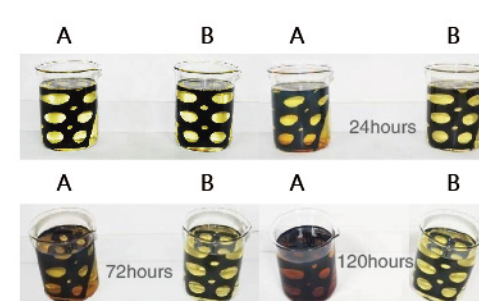
- Made from durable, 100% NBR rubber, it provides superior resistance to water, oil, grease, chemicals and animal fats.
- Open channel structure, combined with recessed grooves, allows solids and liquids to easily fall through mat, leaving a clean, dry surface.
- Designed for heavy industrial and commercial environments where anti-fatigue and superior drainage capabilities are required.

### Application

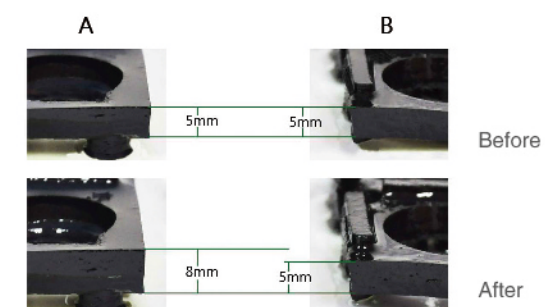
- Defense against slippery floors in commercial kitchens, food processing facilities, cafeterias, manufacturing facilities, bars, hospitals, etc.
- It is an excellent heavy-duty mat solution where a durable, non-slip mat is required.

### TECHNICAL SPECIFICATIONS

Material : NBR Senior nitrile rubber  
 Thickness : 14.5mm      Weight : Approx.14.5kg/pc      Size : 3'x5'(90cmx150cm)  
 Indoor air quality testing : Conforms to GB 18401-2010 ,  
 Does not contain formaldehyde and/or decomposable carcinogenic aromatic amine dyes  
 Oil resistant test : After soaking in IRM903 oil at 60°C for 72 hours, no fading or deformation occurred.

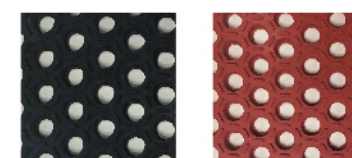


A-Rubber mat  
B-Hex Guard



Before

After



● Black      ● Red

Suitable for : Kitchens, Workshops, Work stations, Aisles, etc.





## 1/2" Slip Guard / 1/4" Slip Guard

Slip Guard is our premium grade safety matting. Designed to be used primarily in industrial and commercial environments, It's built tough to withstand the rigors of daily use. The mat's resilient rubber construction acts to reduce the effects of worker fatigue while providing a safe high traction surface to stand on. It comes standard with molded beveled edges or with an optional interlocking design for extended run lengths. Maintenance is easy through periodic washing with a hose or pressure washer.

### Features

- Provides superior resistance to water, oil, grease, chemicals and animal fats.
- Open channel structure, combined with recessed grooves, allows solids and liquids to easily fall through mat, leaving a clean dry surface.
- Designed for heavy industrial and commercial environments where anti-fatigue and superior drainage capabilities are required.

### Applications

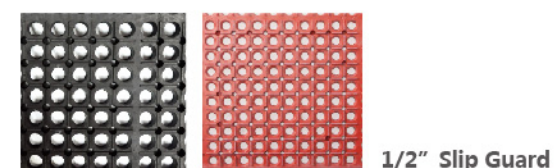
- Slip Guard provides 24/7 defense against slippery floors in commercial kitchens, food processing facilities, cafeterias, manufacturing facilities, bars, hospitals, etc.
- It is an excellent heavy-duty mat solution where a durable, non-slip mat is required.

### TECHNICAL SPECIFICATIONS

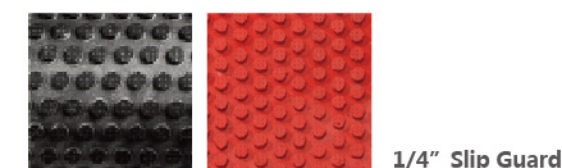
Material : Grease proof synthetic rubber  
Thickness : 1/2" (1.27cm)  
Size A : 2'x3'(60cmx90cm)  
Size B : 3'x5'(90cmx150cm)  
Fire resistance : GB 8624-2012,GB/T 11785-2005,  
GB/T 8626-2007,B1  
Grease Resistance : ASTM D412 6a ASTM  
D1054-2002 ( 2007 )

### TECHNICAL SPECIFICATIONS

Material : High polymer synthetic oil resistant rubber  
Thickness : 1/4" (0.64cm)  
Size : 3'x5'(90cmx150cm)  
Indoor air quality testing : Conform to GB 18401-2010 ,  
Does not contain formaldehyde and decomposable  
carcinogenic aromatic amine dyes  
Oil resistant test : In the condition of 60°C, soaked in IRM903  
oil in 72 hours, No fade, no deformation



● Black ● Red



● Black ● Red

Suitable for : Kitchens, Workshops, Work stations, Aisles, etc.





## Launderable Cotton Mat / Launderable Nylon Mat

Launderable mats with high performance help you take a more proactive approach to providing a safe and healthy environment. Normal vacuuming only captures about 10% of the dirt trapped within a mat, but laundering mats ensure a completely clean and flat mat, time after time of machine washing. FloorGuard Launderable mats are designed with excellent absorption properties, absorbing several times their own weight in moisture and still functioning effectively. The anti-slip nitrile rubber backing is customized for hard floor surfaces or carpeted floors, which resists curling and cracking and lays totally flat. The launderable mat is suitable for heavy traffic buildings, kitchens, hospitals, public buildings, sports & leisure areas, as well as educational facilities. Our launderable mats are fully industrial laundry machine washable, and quick drying. They are the ideal solution for both severe wet and dry dust.

### Features

- Endure over 200 industrial washes and a rental service life up to 3-5 years.
- NFSI certified "high traction" backing helps reduce the possibility of injuries due to slips and falls.



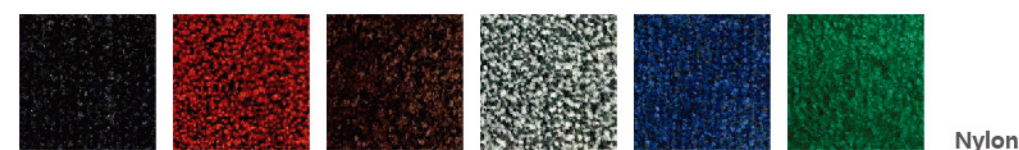
### TECHNICAL SPECIFICATIONS

#### Launderable Cotton Mat

Yarn type : cotton + Micro fibre  
Pile construction : Tufted cut pile  
Pile weight : 700g/m<sup>2</sup>  
Total weight : Approx.2.75kg/m<sup>2</sup>  
Pile height : Approx.9.5mm  
Pile size : 85cm x 150cm/115cm x 180cm/115cm x 250cm  
115cm x 300cm/150cm x 250cm/150cm x 300cm  
Indoor air quality testing : Does not contain formaldehyde and/or decomposable carcinogenic aromatic amine dyes

#### Launderable Nylon Mat

Yarn type : nylon + Micro fibre  
Pile construction : Tufted cut pile  
Pile weight : 700g/m<sup>2</sup>  
Total weight : Approx.2.5kg/m<sup>2</sup>  
Pile height : Approx.8mm  
Pile size : 85cm x 150cm/115cm x 180cm/115cm x 250cm  
115cm x 300cm/150cm x 250cm/150cm x 300cm



Nylon

● Charcoal ● Red ● Brown ● Ash ● Blue ● Green



Cotton

● Charcoal ● Red ● Dark Brown ● Brown ○ Ash ● Blue ● Green

Suitable for inside : Kitchens, Restaurants, Hallways, Aisles, Elevators, Lobbies, Entrances, etc.





## Premium Car Mat / Economic Car Mat

Car mats maintain the value of your vehicle by protecting the carpet, and they are easier to clean than most factory mats. FloorGuard Car Mats are made of the highest quality materials, in order to provide enduring interior vehicle protection. They are designed to cover the floor in front of the front seats, rear seats as well as the trunk (cargo) section. Car mats are manufactured with heavy-duty components including fast-drying, stain-resistant nylon yarn surface and a premium rubber, gripper backing to keep the mats from moving. The stiff, non-slip rubber backing works to resist moisture, helping to protect your interior's original carpets and flooring. Available in different patterns, the tailored car floor mats offer luxurious styling that feel soft and cozy. The softest, most comfortable car mats have a higher pile, providing the ultimate in great underfoot feeling with a variety of color options.

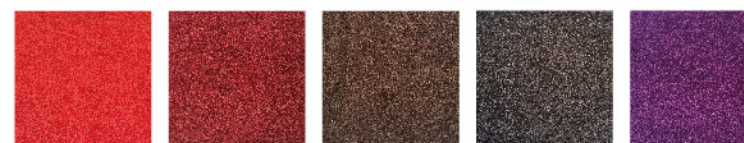
### TECHNICAL SPECIFICATIONS

#### Premium Car Mat

Yarn type : nylon  
Pile construction : Tufted cut pile  
Pile weight : 1200g/m<sup>2</sup>  
Dyeing : Inkjet Printing  
Total weight : Approx.3.70kg/m<sup>2</sup>  
Pile height : Approx.11.5mm  
Roll size : 120cm x 1750cm

#### Economic Car Mat

Yarn type : nylon  
Pile construction : Tufted cut pile  
Pile weight : 750g/m<sup>2</sup>  
Dyeing : Inkjet Printing  
Total weight : Approx.3.45kg/m<sup>2</sup>  
Pile height : Approx.9.5mm  
Roll size : 120cm x 1750cm



● Red ● Dark Red ● Brown ● Coffee ● Purple

Suitable for inside : Car, etc.